

Re)seal

Mechanical Reusable Seal



What is a vehicle security seal?

Vehicle security seals are commonly used on vehicle doors to secure and track shipments during transportation. These seals have a unique serial number and one-time use feature.

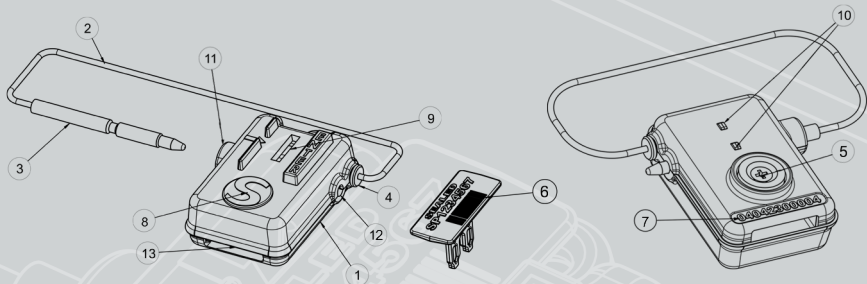
Why should we use Reseal vehicle security seal?

Plastic security seals are the most commonly used vehicle seals because of their low prices compared to bolt and cable seals that have relatively higher prices. Unfortunately plastic security seals if they are not disposed properly can cause environmental pollution. Reseal is a multi-use security seal with a patented design that helps to reduce plastic waste to a minimum.



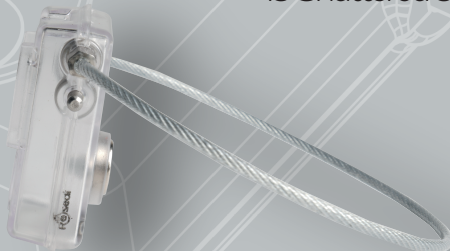
Reseal

Mechanical Reusable Seal



- 1-Transparent main body
- 2-Plastic coated stainless steel wire
- 3-Stainless steel locking pin
- 4-Stainless steel connection bushing
- 5-Neodymium magnet
- 6-Disposable plastic seal

- 7-Reseal serial number
- 8-Corporate logo
- 9-Plastic seal inlet mouth
- 10-Plastic seal exit check points
- 11-Locking pin entry hole
- 12-Locking pin exit hole
- 13-Shattered seal drain outlet



Reseal is a multi-use security seal with a patented design that helps to reduce plastic waste to a minimum.



Thanks to its robust polycarbonate body and stainless steel wire Reseal is an extremely secure vehicle seal. Reseal is used with a disposable plastic seal that is at least 10 times lighter in weight and easier to destroy than many other plastic seals on the market. Using Reseal vehicle seal provides a cost advantage of up to 60%.



Reseal is user friendly and very easy to apply on the vehicle doors. Once applied at the vehicle door the neodymium magnet mounted on the body will keep the Reseal attached and solid at the door during the entire journey. Each Reseal body is branded with a unique number and can be produced in corporate colors upon request. Branding can also be made by laser marking to create an ownership for the product.



Reseal
Mechanical Reusable Seal

Features

- The disposable plastic seal is made of recycled plastic and is at least 10 times lighter than most plastic seals on the market.
- Reseal has a polycarbonate robust body that is perfectly suitable for outdoor use with UV resistance feature.
- The stainless steel wire and 6 mm diameter stainless steel pin are both resistant to corrosion.
- The stainless steel pin can easily pass through the sealing hole at the locking mechanisms of the vehicle doors.
- The magnet mounted in the polycarbonate body will keep the Reseal attached and solid during the entire journey after sealing.
- User friendly and extremely secure patented design.

Packaging Details

Less weight, less storage space

Plastic seal weight: 1 gr

The plastic seals are produced in mats of 5 and supplied in boxes of 100 pcs.

Box dimensions: 208mm x 90mm x 57mm

Quantity: 100 pcs.

Box weight: 120gr

Boxes of 100 pieces are shipped in bigger carton boxes of 1000 pieces (10 boxes). Each box and bigger carton box is clearly labeled with serial numbering and marking details.

Carton box dimensions: 190mm x 235mm x 300mm

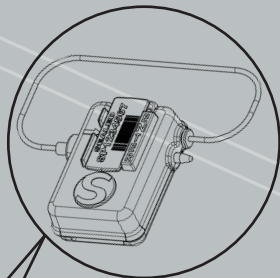
Quantity: 1000 pcs.

Carton box weight: 1210 gr

Easy handling, storage and transportation

Reseal

Mechanical Reusable Seal



Reseal
Mechanical Reusable Seal

Re|seal

Mechanical Reusable Seal

